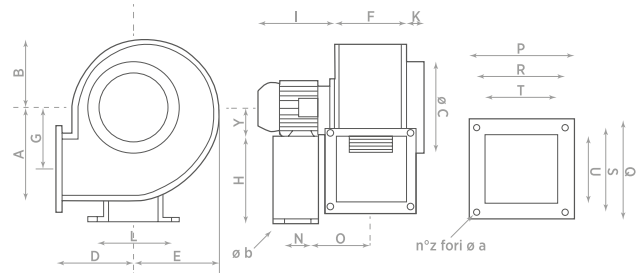
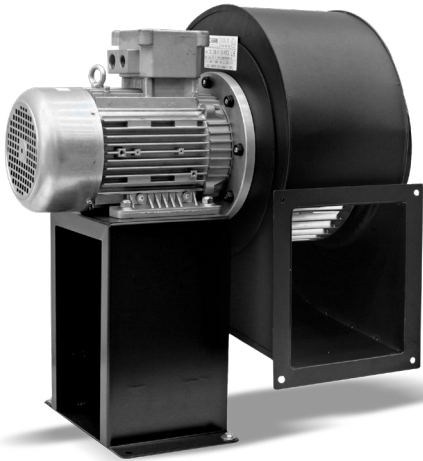


ANTIDEFAGRANTI EX-ATEX – EXPLOSION PROOF FANS EX-ATEX



| MODELLO MODEL EX-ATEX | A | B | ØC | D | E | F | G | H | Y | K | I | L | N | O | P | Q | R | S | T | U | *Z | Øa | Øb |
|-----------------------------|-----|-----|-----|-----|-----|-----|-----|-----|-----|----|-----|-----|-----|-----|-----|-----|-----|-----|-----|-----|----|------|----|
| CS 310 | 139 | 108 | 180 | 127 | 122 | 94 | 91 | - | 63 | 42 | 242 | - | - | - | 135 | 135 | 114 | 114 | 88 | 90 | 4 | 8,2 | - |
| CS 320 | 172 | 128 | 200 | 146 | 150 | 112 | 117 | - | 63 | 45 | 242 | - | - | - | 152 | 152 | 126 | 126 | 105 | 105 | 4 | 8,2 | - |
| CS 330 | 209 | 163 | 250 | 147 | 188 | 141 | 139 | - | 71 | 40 | 242 | - | - | - | 191 | 191 | 165 | 165 | 134 | 134 | 4 | 8,2 | - |
| CS 340 | 250 | 194 | 250 | 178 | 222 | 164 | 162 | - | 80 | 45 | 259 | - | - | - | 225 | 235 | 195 | 205 | 161 | 170 | 4 | 8,2 | - |
| CS 350 | 290 | 225 | 315 | 210 | 260 | 194 | 192 | 245 | 80 | 50 | 259 | 232 | 120 | 149 | 255 | 255 | 225 | 225 | 191 | 194 | 4 | 8,2 | 11 |
| CS 360 | 290 | 225 | 315 | 210 | 260 | 194 | 192 | 245 | 90 | 50 | 300 | 232 | 120 | 155 | 255 | 255 | 225 | 225 | 191 | 194 | 4 | 8,2 | 11 |
| CS 370 | 334 | 244 | 355 | 230 | 250 | 221 | 210 | 350 | 100 | 50 | 354 | 325 | 170 | 173 | 284 | 305 | 254 | 275 | 213 | 244 | 4 | 10,2 | 11 |
| CS 380 | 429 | 315 | 400 | 300 | 370 | 249 | 280 | 350 | 112 | 62 | 358 | 325 | 170 | 194 | 310 | 360 | 280 | 330 | 241 | 295 | 8 | 9 | 11 |

*Z: n° Fori/Holes



Aspiratori centrifughi destinati all'utilizzo in atmosfera potenzialmente esplosiva (Direttiva ATEX 2014/34/UE nei paesi membri della Comunità Europea).

- Idonei per ambito industriale in presenza di gas, vapori e nebbie infiammabili.
- Omologato con certificato CESI n° 03 ATEX 250;
- Espulsione dell'aria in condotti medio-lunghi;
- Aspiratore gruppo II, categoria 2 per gas, sicurezza costruttiva Ex h, livello protezione apparecchio (EPL) Gb, max temp. superficiale T4 (135°C); a richiesta modelli T5 e T6;
- Utilizzabile in aree classificate come zona 1 e 2;
- Ventola e Corpo in lamiera d'acciaio. Corpo verniciato a forno con polveri epossidiche anticorrosione;
- Motore tipo Exd IIC T4 su cuscinetto a sfera classe F con grado di protezione IP55;
- Temp. max aria aspirata: 60°C;
- Il prodotto standard viene fornito con la coclea in posizione CCW 270;
- Su richiesta possono essere fornite posizioni della coclea e senso di rotazione diversi, come indicato nella tabella a pag. 77;
- A partire dal modello 350, i prodotti sono dotati di supporto rigido (sedia) per facilitarne l'installazione;
- Normative di riferimento: EN 80079-36; EN 80079-37; EN 14986.
- **POSIZIONAMENTO:** a Parete

Explosion Proof Certified Centrifugal fans to extract air and fumes through medium/long sized ducts in compliance with ATEX Directive 2014/34/UE.

- Suitable for applications in commercial and industrial environments where the risk of explosion is high and where the surrounding atmosphere contains gas, vapours or highly inflammable steam;
- The whole product and not just the electrical parts, has been certified by CESI institute with CESI n°03 ATEX 250 certificate;
- Fan group II, cat. 2 for gases, construction safety Ex h, device protection level (EPL) Gb, max surface temp. T3 (200°C);
- Classified for zones 1 and 2;
- This approval has required specific safety tests and proper examinations on products to verify how the adopted solutions have satisfied the essential Directive requirements;
- Steel plated frame protected by an epoxy-based anticorrosive paint and aluminium centrifugal impeller statically and dynamically balanced;
- Exd IIC T4, ball bearing class F insulation motor IP55 protected;
- Max temperature of extracted air: 60°C;
- Models CS 350, 360, 370 and 380: mounted on rigid base support to make installation easier;
- Standard product supplied with impeller housing position CCW 270, different positions available on request (see table on page 78);
- Reference Standards: EN 80079-36; EN 80079-37; EN 14986.
- **POSITIONING:** Wall mounting

DATI TECNICI – TECHNICAL DATA

| MODELLO MODEL EX-ATEX | CODICE CODE | MOTORE MOTOR | MARCATURA MARKING | N° POLI N° POLES | GIRAL MINUTO REV. PER MIN. (RPM) | TENSIONE VOLTAGE (Volt) | FREQUENZA FREQUENCY (Hz) | PORTATA FLOW RATE (m³/h) | PRESS. MAX. MAX PRESS. (mm H ₂ O) | PRESS. MAX. MAX PRESS. (Pa) | POTENZA POWER (W) | CORR. NOM. (A) NOM. CURR. 230V 400V | IP MOTORE | RUMOROSITÀ NOISE dB(A) _{1m} | PESO WEIGHT (Kg) |
|-----------------------------|----------------|-----------------|----------------------|---------------------|--|-------------------------------|--------------------------------|--------------------------------|--|-----------------------------------|-------------------------|---|-----------|--|------------------------|
| CS 310 4M | 0032500 | single p. | II2GExhT4 | 4 | 1400 | 230 | 50 | 500 | 16 | 157 | 200 | 1 - | IP55 | 64 | 10 |
| CS 320 4M | 0032700 | single p. | II2GExhT4 | 4 | 1400 | 230 | 50 | 720 | 21 | 206 | 250 | 1,5 - | IP55 | 67 | 14 |
| CS 310 4T | 0032600 | three p. | II2GExhT4 | 4 | 1400 | 230/400 | 50 | 500 | 16 | 157 | 200 | 1 0,59 | IP55 | 64 | 13 |
| CS 320 4T | 0032800 | three p. | II2GExhT4 | 4 | 1400 | 230/400 | 50 | 720 | 21 | 206 | 250 | 1,75 1 | IP55 | 67 | 14 |
| CS 330 4T | 0032900 | three p. | II2GExhT4 | 4 | 1400 | 230/400 | 50 | 1500 | 38 | 373 | 400 | 1,9 1,1 | IP55 | 70 | 21 |
| CS 340 4T | 0032100 | three p. | II2GExhT4 | 4 | 1400 | 230/400 | 50 | 1900 | 47 | 461 | 1000 | 3,5 2 | IP55 | 73 | 31 |
| CS 350 4T | 0033000 | three p. | II2GExhT4 | 4 | 1400 | 230/400 | 50 | 2900 | 50 | 490 | 1400 | 4 2,31 | IP55 | 76 | 37 |
| CS 360 4T | 0032200 | three p. | II2GExhT4 | 4 | 1400 | 230/400 | 50 | 4100 | 60 | 589 | 1900 | 5,7 3,3 | IP55 | 80 | 44 |
| CS 370 4T | 0033100 | three p. | II2GExhT4 | 4 | 1400 | 230/400 | 50 | 5600 | 73 | 716 | 2500 | 8,7 5 | IP55 | 84 | 67 |
| CS 380 4T | 0033800 | three p. | II2GExhT4 | 4 | 1400 | 230/400 | 50 | 9100 | 105 | 1030 | 4500 | 15,6 9 | IP55 | 88 | 91 |

AMBITI APPLICATIVI

Indicato per installazione in ambito commerciale, terziario e industriale. Destinati all'utilizzo in atmosfera potenzialmente esplosiva:

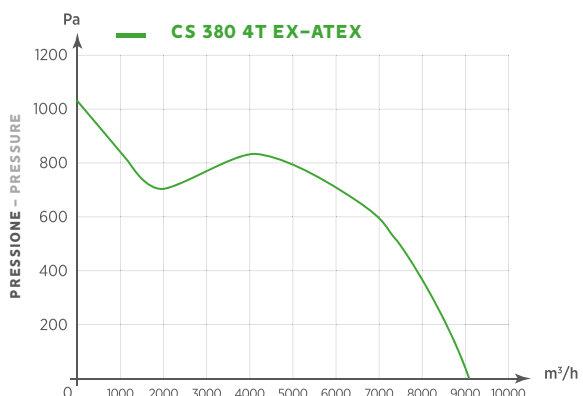
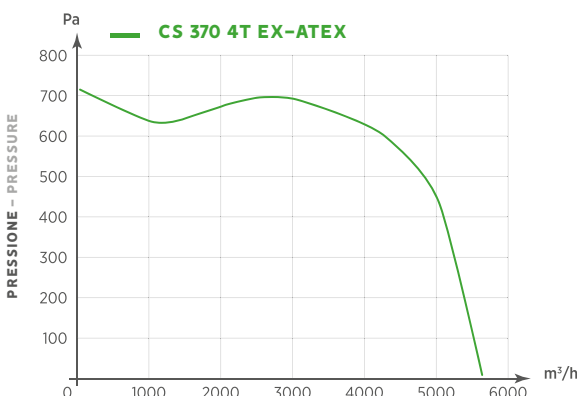
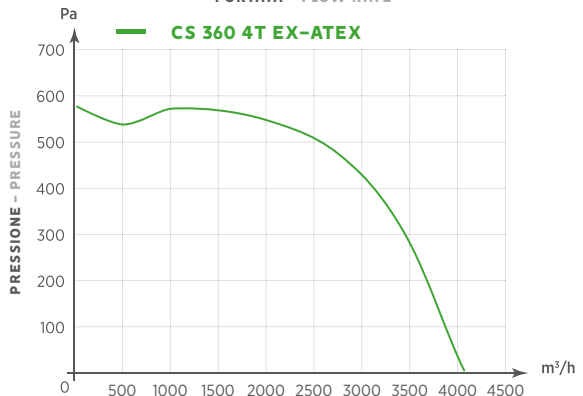
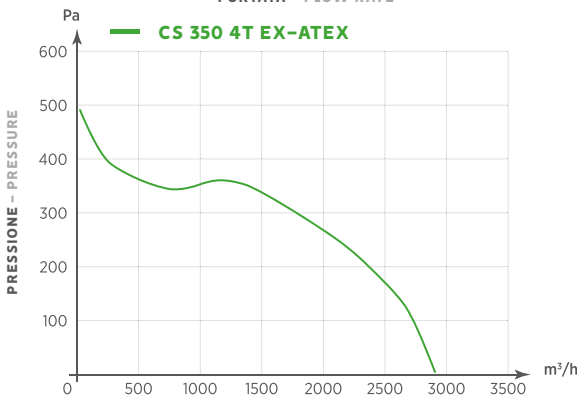
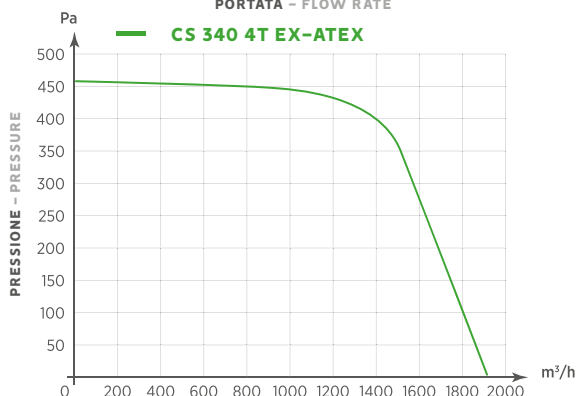
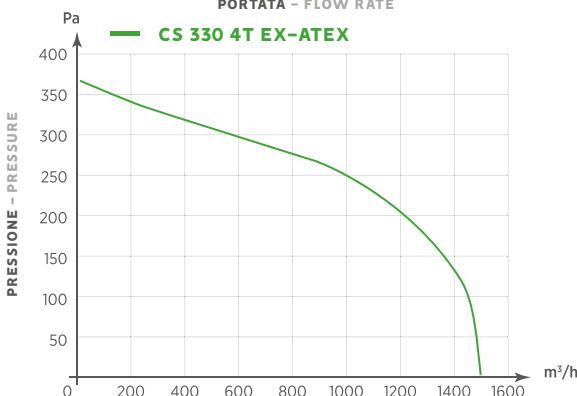
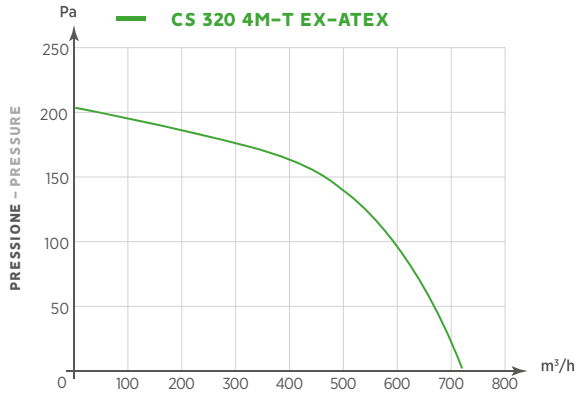
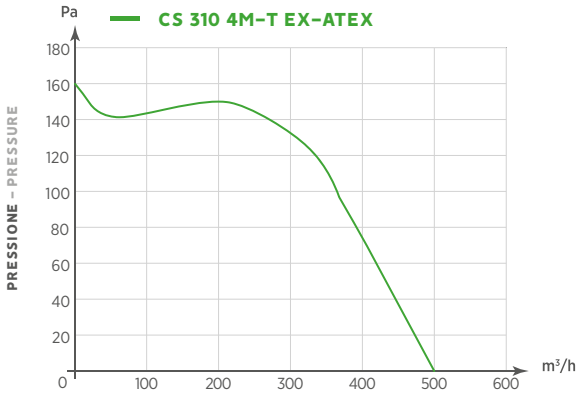
- Negozi;
- Officine;
- Impianti sportivi;
- Supermercati e centri commerciali;
- Depositi e magazzini;
- Industrie;
- Macchinari.

ENVIRONMENTS APPLICATION

Suitable for industrial, civil and commercial application where the risk of explosion is high.

- Shops;
- Workshops;
- Sports facilities;
- Supermarkets and shopping centers;
- Warehouse;
- Factories;
- Machinery

GRAFICI DI PORTATA - FLOW CHARTS



**ACCESSORI INSTALLABILI FUORI ZONA EX ATEX (PAGINA 64)
ACCESSORIES SUITABLE FOR INSTALLATION OUTSIDE OF THE EX ATEX AREA (PAGE 64)**



Regolatori
Controllers